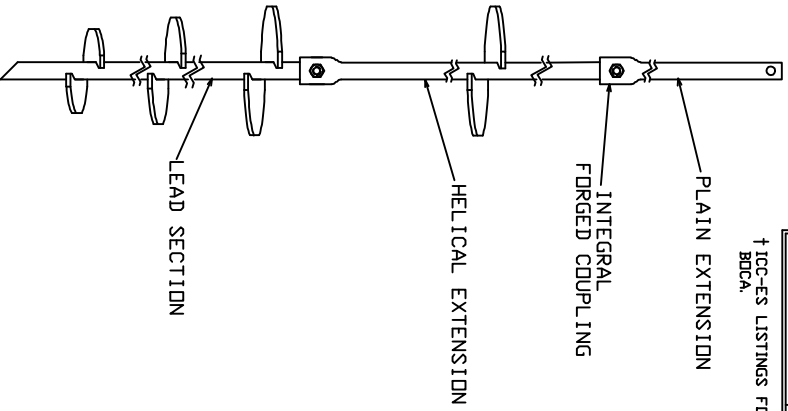


SSS EXTENSIONS

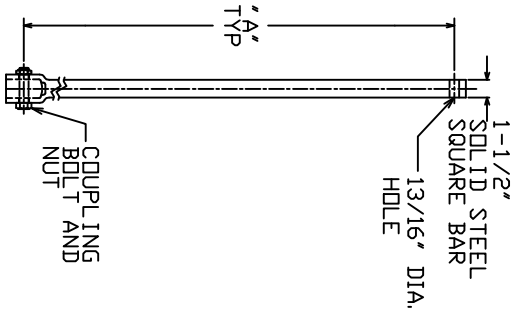
TORQUE STRENGTH RATING - 5,500 FT-LB
 ULTIMATE CAPACITY* (TENSION/COMPRESSION)-55 KIP
 * BASED ON A TORQUE FACTOR (K+)=10
 ULTIMATE TENSION STRENGTH (COUPLING BOLT)-70 KIP

EXTENSION		
CAT. NO.	"A"	ICC-EST LISTED
C150-0047	37-3/4"	X
C150-0008	57-1/2"	X
C150-0009	80-1/2"	X
C150-0048	120"	X
C150-0032	20"	
C114-0009	11"	

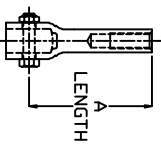
† ICC-ES LISTINGS FORMERLY ICRB, SBCCI, AND BCCA.



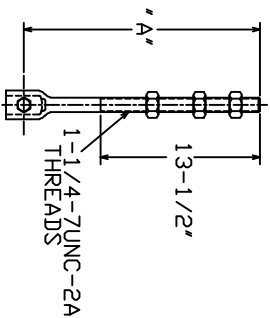
TYPICAL ANCHOR/PIER ASSEMBLY



PLAIN EXTENSION



1" DIAMETER ADAPTER
 C114-0009 FOR 1-1/2" SHAFT



THREADED ADAPTER
 C150-0032 FOR 1-1/2" SHAFT

-NOTES-

- HOT DIP GALVANIZED PER ASTM A153-(LATEST REV.)
- LEAD AND EXTENSION SECTION AND PILDOT POINT LENGTHS ARE NOMINAL.
- SHAFT MATERIAL-HOT ROLLED ROUND-CORNERED-SQUARE (RCS) SOLID STEEL BARS PER ASTM A29; MINIMUM YIELD STRENGTH=70 KSI.
- COUPLING BOLTS: 3/4" DIAMETER X 3" LONG HEX HEAD PER ASTM A320 GRADE L7.
- MANUFACTURER TO HAVE IN EFFECT INDUSTRY RECOGNIZED WRITTEN QUALITY CONTROL FOR ALL MATERIALS AND MANUFACTURING PROCESSES.
- ALL WELDING TO BE DONE BY WELDERS CERTIFIED UNDER SECTION 5 OF THE AWS CODE D1.1.
- SEE ICC EVALUATION SERVICE INC., EVALUATION REPORT NO. ER-5110 FOR ALLOWABLE VALUES AND/OR CONDITIONS OF USE CONCERNING MATERIAL PRESENTED IN THIS DOCUMENT.
- REFER TO SA150-0001 DRAWING FOR LEAD SECTIONS AND HELICAL EXTENSIONS.

ICC-ES LISTED
 RR 94-27

ICC-ES LISTED
 ER-5110

ICC-ES LISTED
 ER-9504

CHANCE		HUBBELL POWER SYSTEMS HUBBELL POWER SYSTEMS, INC.	
CONFIDENTIAL: THIS DRAWING AND THE CONTENTS HEREOF ARE THE PROPERTY OF HUBBELL POWER SYSTEMS, INC. AND ARE NOT TO BE REPRODUCED, COPIED, OR TRANSMITTED IN ANY FORM OR BY ANY MEANS, WITHOUT THE WRITTEN CONSENT OF HUBBELL POWER SYSTEMS, INC. ALL RIGHTS RESERVED UNDER THE COPYRIGHT LAWS.			
DO NOT SCALE THIS DRAWING	SIZE SC SA150-0047	DWG NO. 0047	DATE / PART / ASSY NO. SEE CHART DATE 4/25/05
REV	C	REV	C
SSS EXTENSIONS		SHEET 2/2	