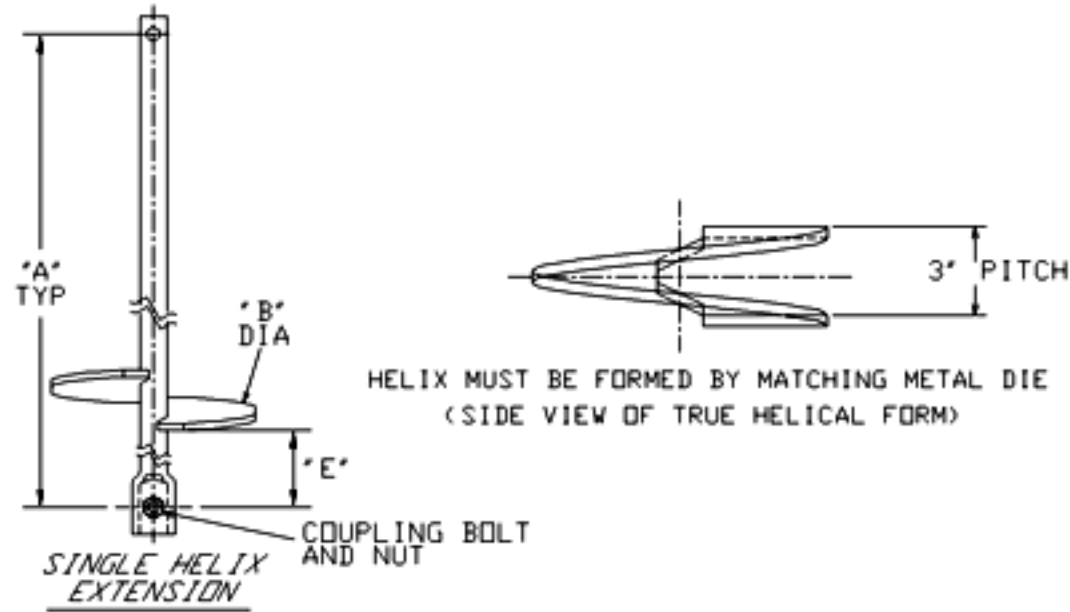


# SS5 HELICAL PIERS AND ANCHORS

TORQUE STRENGTH RATING-5,500 FT-LB  
 ULTIMATE CAPACITY\* (TENSION/COMPRESSION)-55 KIP  
 \*BASED ON A TORQUE FACTOR (K<sub>t</sub>)=10  
 SINGLE HELIX ULTIMATE STRENGTH-40 KIP  
 ULTIMATE TENSION STRENGTH (COUPLING BOLT)-70 KIP

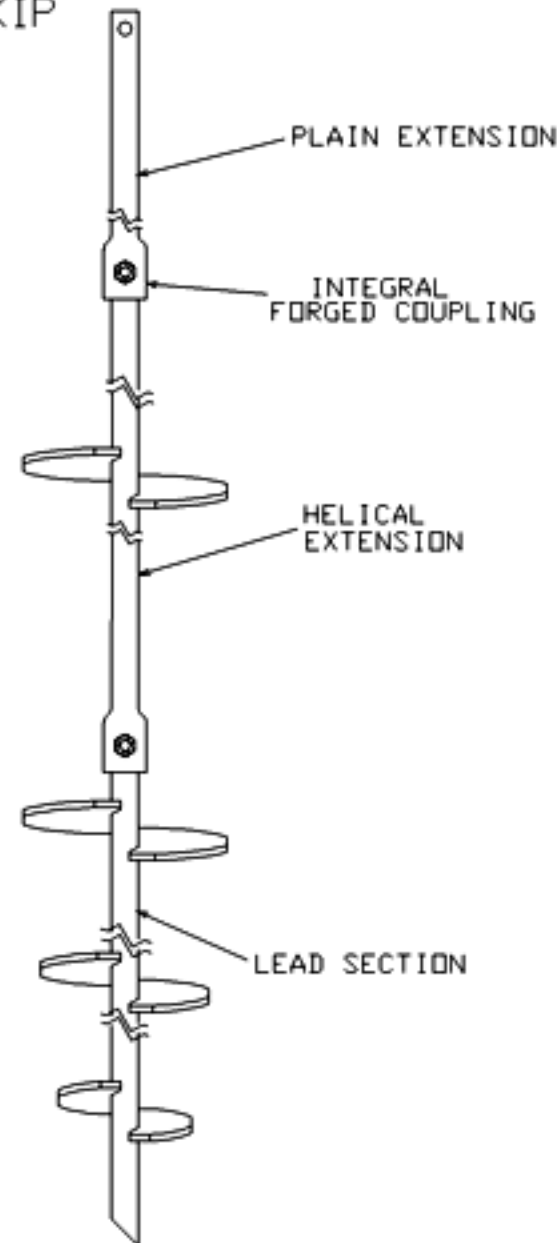


EXTENSION				
CAT. NO.	"A"	"B"	"E"	ICC-ES <sup>1</sup> LISTED
C150-0159	57-1/2"	12"	27-1/2"	X
C150-0166	37-3/4"	14"	27-3/4"	X
C150-0167	57-1/2"	14"	27-1/2"	X
C150-0158	58"	10"	8"	
T150-0440	59"	14"	4"	

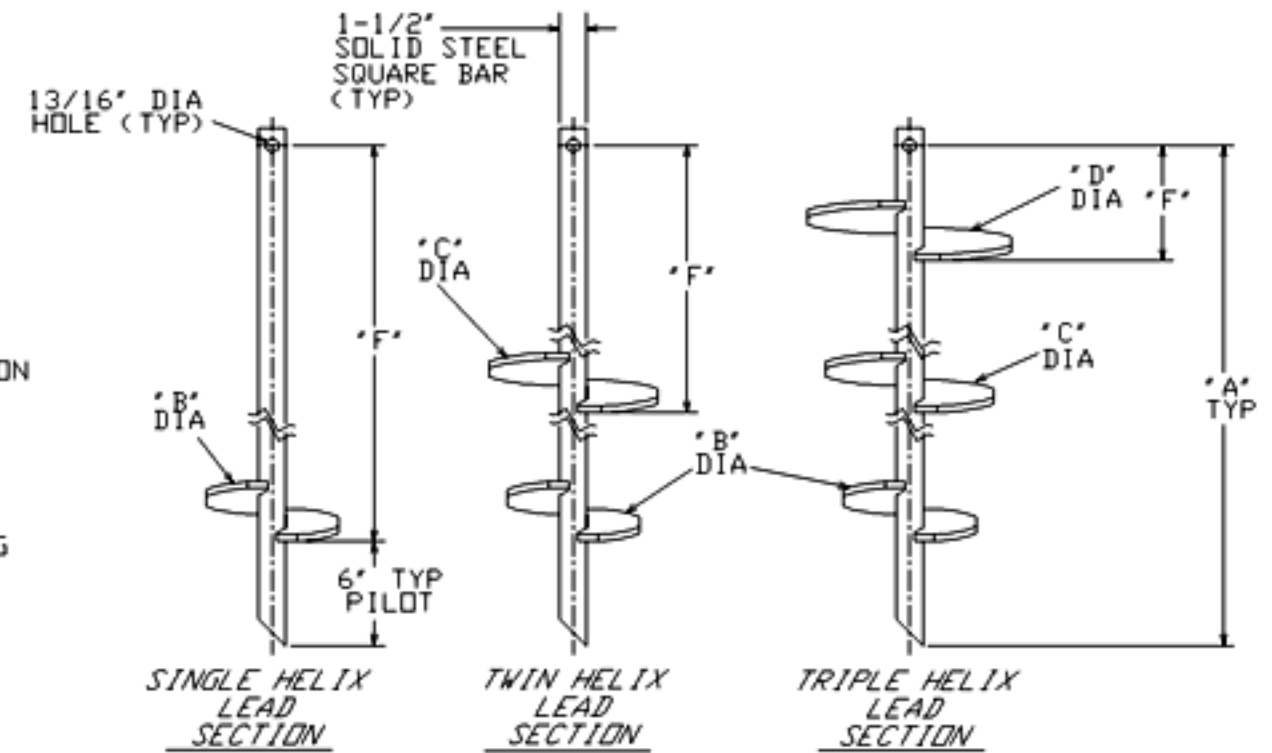
<sup>1</sup> ICC-ES LISTINGS FORMERLY ICBD AND SBCCI.

## -NOTES-

- HOT DIP GALVANIZED PER ASTM A153-(LATEST REV.)
- LEAD AND EXTENSION SECTION AND PILOT POINT LENGTHS ARE NOMINAL. PILOT FOR T150-0000 AND C150-0156 IS 3.75" AND 2.5" RESPECTIVELY.
- SHAFT MATERIAL-HOT ROLLED ROUND-CORNERED SQUARE (RCS) SOLID STEEL BARS PER ASTM A29; MINIMUM YIELD STRENGTH=70 KSI.
- HELIX MATERIAL-HOT ROLLED LOW CARBON STEEL SHEET, STRIP, OR PLATE PER ASTM A572, DR A1018, DR A656; MINIMUM YIELD STRENGTH=50 KSI; 3/8" THICK.
- COUPLING BOLTS: 3/4" DIAMETER X 3" LONG HEX HEAD PER ASTM A320 GRADE L7.
- NOMINAL SPACING BETWEEN HELICAL PLATES IS THREE TIMES THE DIAMETER OF THE LOWER HELIX.
- MANUFACTURER TO HAVE IN EFFECT INDUSTRY RECOGNIZED WRITTEN QUALITY CONTROL FOR ALL MATERIALS AND MANUFACTURING PROCESSES.
- ALL WELDING TO BE DONE BY WELDERS CERTIFIED UNDER SECTION 5 OF THE AWS CODE D1.1.
- SEE ICC EVALUATION SERVICE INC., EVALUATION REPORT NO. ER-5110 FOR ALLOWABLE VALUES AND/OR CONDITIONS OF USE CONCERNING MATERIAL PRESENTED IN THIS DOCUMENT.
- ALL HELIX HAVE A SHARPENED LEADING EDGE.
- REFER TO DRAWING SA150-0047 FOR PLAIN EXTENSIONS AND TERMINATIONS.



TYPICAL ANCHOR/PIER ASSEMBLY



LEAD SECTION						
CAT. NO.	"A"	"B"	"C"	"D"	"F"	ICC-ES <sup>1</sup> LISTED
C150-0001	82-1/4"	8"			76-1/4"	X
C150-0002	59"	8"			53"	X
C150-0003	82-1/4"	10"			76-1/4"	X
C150-0004	82-1/4"	12"			76-1/4"	X
C150-0005	82-1/4"	14"			76-1/4"	X
C150-0030	82-1/4"	6"	8"		58-1/4"	X
C150-0006	82-1/4"	8"	10"		52-1/4"	X
C150-0031	123"	8"	10"		93"	X
C150-0007	63-1/4"	8"	10"	12"	5-3/4"	X
C150-0058	59"	10"			53"	X
T150-0086	35-3/4"	6"	6"		11-3/4"	X
C150-0051	82-1/4"	10"	12"		46-1/4"	X
C150-0160	35-3/4"	8"	10"		5-3/4"	X
C150-0161	42"	10"	12"		6"	X
C150-0242	59"	12"			53"	X
C150-0243	59"	14"			53"	X
C150-0244	35-3/4"	6"	8"		11-3/4"	X
C150-0397	82-1/4"	8"	10"	12"	22-1/4"	
C150-0398	123"	10"	12"	14"	51"	
C150-0399	123"	12"	14"	16"	39"	
C150-0489	82-1/4"	10"	12"	14"	10-1/4"	
T150-0000*	82-1/4"	8"	10"	12"	6-1/2"	
C150-0156	25"	8"			21-1/2"	

<sup>1</sup> ICC-ES LISTINGS FORMERLY ICBD, SBCCI, AND BOCA.

\* HELIX ARE SPACED 3' APART

ICC-ES LISTED  
ER-9504

ICC-ES LISTED  
ER-5110

ICC-ES LISTED  
RR 94-27

CHANCE	<b>HUBBELL POWER SYSTEMS</b> TITLE SS5 LEADS AND HELICAL EXTENSIONS		
CONFIDENTIAL: THIS DRAWING AND ITS CONTENTS ARE CONFIDENTIAL AND THE EXCLUSIVE PROPERTY OF HUBBELL POWER SYSTEMS. NO PUBLICATION, DISTRIBUTION OR COPIES MAY BE MADE WITHOUT THE WRITTEN CONSENT OF HUBBELL POWER SYSTEMS. HUBBELL POWER SYSTEMS UNPUBLISHED. ALL RIGHTS RESERVED UNDER THE COPYRIGHT LAWS.	SIZE DWG NO. SC SA150-0001	CAT / PART / ASSY NO. SEE CHART	REV K
DO NOT SCALE THIS DRAWING	DRN BY KSH	DATE 4/25/05	SHEET 1/2